

ABB MEASUREMENT & ANALYTICS | DATA SHEET

# AAM631

## Aztec 600 ISE ammonia analyzer



---

## Measurement made easy

Reliable on-line monitoring of ammonia

---

### Reliable ammonia measurement

- continuous measurement using ISE technology
- automatic 2-point calibration
- temperature-controlled flow cell

---

### Easy to operate

- familiar Windows™ menu system
- built-in context-sensitive help
- data trending and analysis

---

### Easy to maintain

- up to 3 months unattended operation using EcoMode
- simple-to-perform annual service
- helpful maintenance diagnostics screens

---

### Improved reporting

- audit and alarm logs
- onboard data logging
- in-built SD card reader for secure archiving

---

### Full communications

- web- and ftp-enabled for easy data file access, remote viewing and configuration
- email capability
- optional PROFIBUS® DP V1.0

## The Aztec 600 colorimetric range

The Aztec 600 analyzers from ABB are a range of compact, yet reliable, on-line ion-selective (ISE) and colorimetric analyzers designed for monitoring the key parameters in water treatment.

They combine Aztec's unique fluid handling system with the latest electronics platform (featuring Windows menu-driven software), to create a range of analyzers that provide accurate, reliable measurement, that are simple-to-operate and maintain.

The following parameters are available in the Aztec 600 range:

### Colorimetric:

- aluminium
- ammonia
- color
- iron
- manganese
- phosphate

### ISE:

- ammonia
- fluoride



Figure 1 Aztec 600 Colorimetric analyzer (left) and Aztec 600 ISE analyzer (right)

## Aztec 600 ISE ammonia analyzer

The AAM631 ammonia analyzer uses a robust gas sensing ammonia electrode to provide accurate and reliable continuous on-line analysis of ammonia levels in waters up to 1000 ppm NH<sub>3</sub>.

Measurement results are updated every 2 seconds to the large, full color graphical display where process trends can be viewed locally. With the AAM631's EcoMode engaged, buffer usage is minimized allowing up to 3 months continuous operation from a set of reagents.

Users of this system also benefit from the AAM631's low maintenance requirements, ease-of-use, auto-calibration and proven chemistry methodology.

Process data, as well as the content of alarm and audit logs, can be saved to a removable SD card for record keeping and analysis using ABB's DataManager Pro data analysis software.

## Applications

Typical applications for the AAM631 include:

- monitoring of ammonia levels in source waters for intake protection for drinking water treatment plants
- monitoring of ammonia levels in final drinking water for chloramination schemes
- monitoring of ammonia levels in industrial effluents
- monitoring of ammonia levels in municipal wastewaters
- monitoring of ammonia levels in river water

---

## Ammonia in water

Ammonia is considered one of the most significant pollutants in the aquatic environment not only because of its highly toxic nature and prevalence in surface waters, but also because many effluents have to be treated extensively to prevent the concentrations of ammonia in surface waters being unacceptably high.

Ammonia can enter the aquatic environment via direct means such as municipal effluent discharges, industrial processes and agricultural run-off, and indirect means such as nitrogen fixation and the excretion of nitrogenous wastes from animals.

The term ammonia refers to 2 chemical species that are in equilibrium in water ( $\text{NH}_3$ , un-ionized and  $\text{NH}_{4+}$ , ionized). The ratio of these species in a given aqueous solution is dependent on both pH and temperature.

The toxicity to ammonia is attributable primarily to the un-ionized form ( $\text{NH}_3$ ).

Although ammonia in drinking water is not considered of immediate health relevance, it has been shown to compromise disinfection efficiency, result in nitrite formation in distribution systems, cause the failure of filters for the removal of manganese and cause taste and odor problems.

---

## User benefits of on-line ammonia monitoring using the AAM631

### The Aztec 600 solution

Given the toxic nature of ammonia to fish and aquatic organisms, even in very low concentrations, the removal of ammonia from both municipal and industrial effluents must be controlled accurately and monitored carefully to ensure that locally-set prescribed operational criteria is adhered to. The AAM631 provides a continuous measurement of the total ammonia concentration that is the sum of the gas  $\text{NH}_3$  and the cation  $\text{NH}_{4+}$  – this is commonly expressed as total ammonia-nitrogen (TAN).

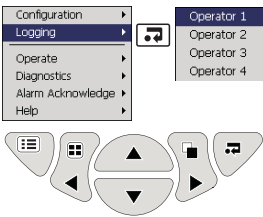
The process alarms from the AAM631 can be linked to an appropriate alarm monitoring system, enabling immediate process decisions to be made to ensure that the ammonia concentration stays within the plant's target operating band. To help operators to verify analyzer performance, the AAM631 features automatic 2-point calibration with separate high and low standard solutions. This provides users with a powerful, accurate and reliable tool for efficient monitoring and control of the wastewater treatment processes / plant to ensure compliance with local discharge consent limits and current legislation.

# Overview of Aztec 600 ISE ammonia analyzer

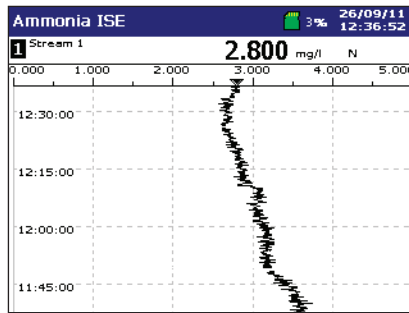
## Easy-to-use Windows menu system



## Simple navigation



## Graphical results trending



## Flexible communications

Communications			
Ethernet	email 1	email 2	Profibus
	IP-address		[10.44.211.49]
	Subnet mask		[255.255.255.0]
	Default Gateway		[10.44.211.1]
	FTP user 1		
	FTP user 2		
	FTP user 3		
	FTP user 4		

- Ethernet connectivity
- 6 current outputs
- 10 alarm relays (configurable)
- PROFIBUS DP v1.0
- SD memory card
- Process data trends

## Temperature-controlled flow cell for accurate measurement

- Adjusts and stabilizes sample temperature
- Maintains electrodes at constant temperature
- Removes measurement errors caused by temperature fluctuation

## Automatic 2-point calibration

- Verifies analyzer's performance
- Fully user-programmable
- Compensates for any electrode drift

## Integrated side-sample pot for simple installation

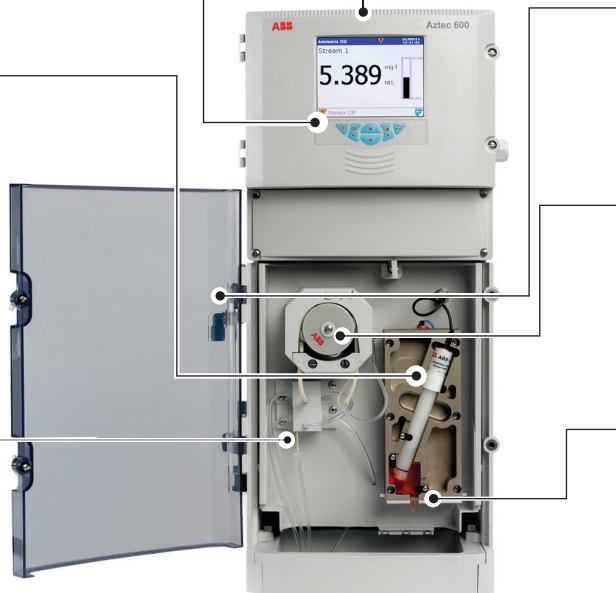
- Magnetic sample flowswitch alarms when sample is not present

## Buffered measurement for greater accuracy

- Up to 3 months continuous measurement between routine buffer replacements with EcoMode (refer to "Solution usage" on page 8)

## Continuous measurement using ISE technology

- Updated measurement result every 2 seconds
- Robust gas sensing ammonia electrode with visual membrane check feature





## Reliable measurement

The AAM631 has been designed for ease-of-use and maintenance simplicity, while offering the benefits of flexible communication and advanced data acquisition.

### Measuring principle

The AAM631 measures total ammonia using a robust gas-sensing ammonia probe. The probe contains a glass pH electrode and a robust, long-life reference electrode. The 2 electrodes are combined into a single assembly and connected as a pH measuring pair through an internal reservoir of filling solution, separated from the sample by a gas-permeable hydrophobic membrane.



Figure 2 Ammonia electrode

To measure the total ammonia-nitrogen (TAN) the AAM631 uses an alkali buffer reagent to raise the sample pH to a value greater than 11 to convert all the ionized ammonium ( $\text{NH}_4^+$ ) to the un-ionized ( $\text{NH}_3$ ) form.

As sample flows past the probe membrane, the partial pressures of the ammonia gas in the sample on one side of the membrane and the filling solution on the other equalize, transferring the  $\text{NH}_3$  gas across the membrane. At equal pressure, the concentration of ammonia in the thin film of filling solution between the probe membrane and the pH-sensitive glass electrode membrane equals that in the sample.

The resultant change in the pH value of the internal filling solution is measured by the pH electrode pair, creating an output potential related to the ammonia concentration in the sample. Like most ion-selective electrodes, the ammonia probe produces a logarithmic output in respect to the measured concentration.

One of the key benefits of this particular electrode design is that the outer body is translucent so that the internal filling solution can be viewed easily whilst in operation. If the gas-permeable membrane is damaged, allowing alkaline solution to leak, the filling solution changes color from yellow to blue so that it can be seen and replaced easily.

### Temperature-controlled flow cell

It is important to control both sample and electrode temperature as any variation affects the electrode potential, resulting in significant measurement errors.

The Aztec 600 ISE ammonia electrode is housed in a fully enclosed temperature-controlled cell that adjusts and stabilizes the temperature of the sample before it is introduced to the electrode. This ensures that a constant temperature is maintained during both calibration and measurement.



Figure 3 Electrode in temperature-controlled flow cell

### Automatic calibration

The Aztec 600 ISE range features automatic 2-point calibration that verifies the analyzer's performance against standards of a known concentration. Calibration frequency can be programmed by the user to occur either weekly or up to 4 times per day.

### Measurement technique

A single peristaltic pump caters for all fluid and chemical handling. This draws sample from the process in through the analyzer side sample pot. The sample is then combined with the buffer reagent.

The buffer reagent is used to raise the sample pH to convert all the ionized ammonium ( $\text{NH}_4^+$ ) to the un-ionized ( $\text{NH}_3$ ) form. The conditioned sample is passed through a temperature block to stabilize the temperature and provide further mixing before being presented to the ammonia probe.

The output of the electrode is converted (by the analyzer) to indicate the ammonia concentration in ppm, mg/l, ppb or  $\mu\text{g/l}$ . The measured ammonia concentration can be expressed as  $\text{NH}_3$ ,  $\text{NH}_3\text{-N}$  or  $\text{NH}_4$ .

Finally, the sample flows to waste.

During automatic calibration, the sample supply is isolated and the calibration standards are presented to the electrode by sequencing of the high and low solenoid valves.

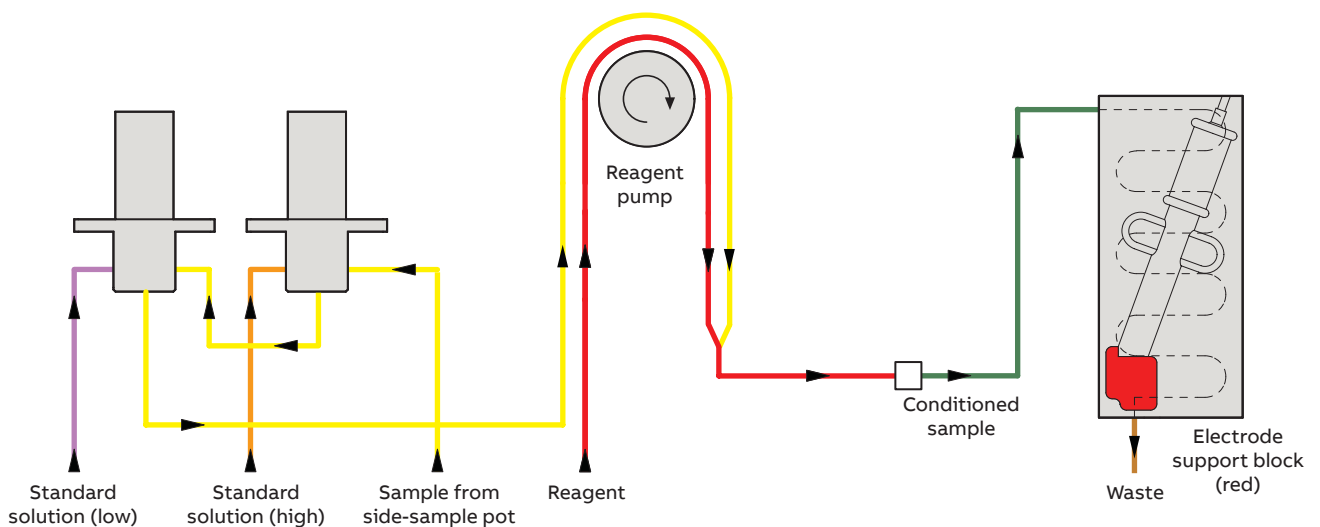


Figure 4 Schematic flow diagram

## ...Reliable measurement

### Simple to operate

The powerful and user-friendly, Windows menu-driven software enables users to operate the analyzer with the minimum amount of training.

The comprehensive range of menu screens is simple-to-access using the 6 membrane keys.

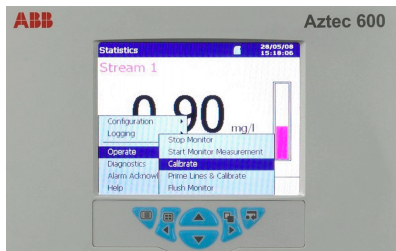


Figure 5 Windows-based interface

These menus include data logging and graphical trending screens, operation command screens, full setup configuration screens and a range of self-diagnostics (including full calibration and operating status screens).

Historical logs provide operators with access to alarm data and audit trail data. Process data and historical logs are archived securely to a removable SD card.

All information is displayed clearly on the easy-to-read 145 mm (5.7 in.) color LCD display and is available in a range of languages.



Figure 6 Communications window

### Simple to maintain

The Aztec 600 ISE range is designed to be as maintenance-free as possible. The inherent product design and auto-calibrating features reduce the amount of maintenance required for external cleaning of sample lines, changing of reagents and probe membrane and annual servicing.

### Service schedule

Period	Schedule*
12 monthly	Replace pump capstans and sample tubing.
24 monthly	Replace pump capstans and monitor tubing.

\*Periodic replacement of probe membrane and electrode filling solution is application specific.

All parts are provided in convenient maintenance kits.

### Solution usage

The analyzer features an EcoMode function that reduces the amount of buffer and sample drawn into the analyzer during measurement by approximately one third when compared to the standard operating speed. EcoMode enables 3 months continuous measurement between routine buffer replacements in addition to a reduction in the analyzer waste generated. EcoMode can be activated or deactivated by the user.

Solution	Average consumption
Calibration standards	2.5 liters (0.66 US gallons) every 60 days*.
Buffer	10 liters (2.64 US gallons) every 2 to 3 months.

\*Based on a daily calibration



## Flexible communications

### Ethernet-ready

The AAM631 provides 10BaseT Ethernet communications via a standard RJ45 connector and uses industry-standard protocols TCP/IP, FTP and HTTP. The use of standard protocols enables easy connection into existing PC networks.

### Data file access via FTP (file transfer protocol)

The AAM631 features FTP server functionality. The FTP server in the analyzer is used to access its file system from a remote station on a network. This requires an FTP client on the host PC. Both MS-DOS® and Microsoft® Internet Explorer version 5.5 or later can be used as an FTP client.

- Using a standard web-browser or other FTP client, data files contained within the analyzer's memory or memory card can be accessed remotely and transferred to a PC or network drive.
- Four individual FTP users' names and passwords can be programmed into the AAM631. An access level can be configured for each user.
- All FTP log-on activity is recorded in the audit log of the analyzer.
- Using ABB's data file transfer scheduler program, data files from multiple analyzers can be backed-up automatically to a PC or network drive for long-term storage, ensuring the security of valuable process data and minimizing operator intervention.

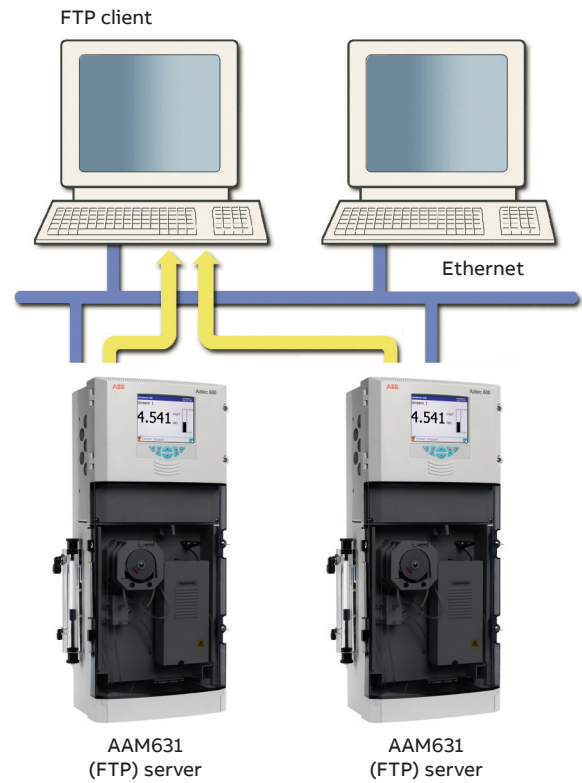
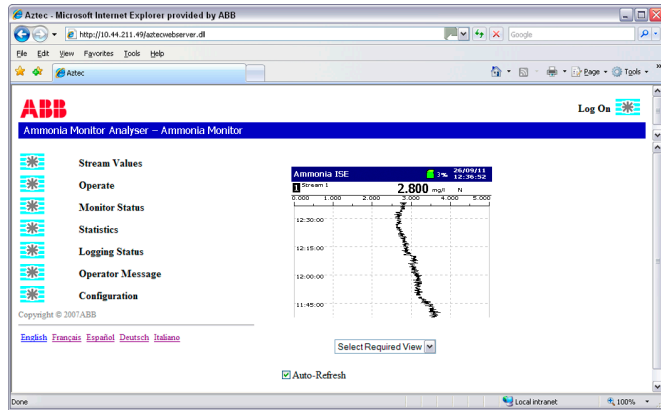


Figure 7 Aztec 600 FTP server

## ...Flexible communications

### Embedded web server

The AAM 631 has an embedded web-server that provides access to web pages created within the analyzer. The use of HTTP (Hypertext Transfer Protocol) enables standard web browsers to view these pages.



- Accessible through the web pages are the current display of the analyzer, detailed information on stream values, reagent and solution levels, measurement status and other key information.
- The audit and alarm logs stored in the analyzer's internal buffer memory can be viewed on the web pages.
- Operator messages can be entered via the web server, enabling comments to be logged to the analyzer.
- The web pages and the information they contain are refreshed regularly, enabling them to be used as a supervision tool.
- The analyzer's configuration can be selected from an existing configuration in the internal memory or a new configuration file transferred to the instrument via FTP.
- The analyzer's real-time clock can be set via the web server. Alternatively, the clocks of multiple analyzers can be synchronized using ABB's File Transfer Scheduler software.

### Email notification

Via the AAM631's built-in SMTP client, the analyzer is able to email notification of important events. Emails triggered from alarms or other critical events can be sent to multiple recipients. The analyzer can also be programmed to email reports of the current measurement status or other parameters at specific times during the day.

### PROFIBUS

The AAM631 can be equipped with PROFIBUS DP V1.0 to enable full communications and control integration with distributed control systems.

## Specification

### Measurement

#### Units

- NH<sub>3</sub>
- NH<sub>3</sub>-N
- NH<sub>4</sub>

#### Range

0.050 to 1000 ppm NH<sub>3</sub>

#### Measurement principle

Gas-sensing ammonia probe

#### Measurement mode

Continuous

### Measurement performance

#### Accuracy<sup>1</sup>

- $<\pm 5\%$  of reading<sup>2</sup> or  $\pm 0.02$  ppm for 0.05 to 500 ppm NH<sub>3</sub> (whichever is the greater)
- $<\pm 7.5\%$  of reading<sup>2</sup> for 500 to 1000 ppm NH<sub>3</sub>

#### Repeatability

$<\pm 2\%$  of reading<sup>3</sup> or  $\pm 0.02$  ppm (whichever is the greater)

#### Response time

- Normal operating mode: T90 typically 5 minutes
- EcoMode: T90 typically <7.5 minutes

#### Resolution

0 to 10 ppm:	0.001 ppm
10 to 100 ppm:	0.01 ppm
100 to 1000 ppm:	0.1 ppm

#### Calibration

2-point, automatic calibration, with the option of manual initiation. The interval between automatic calibrations is selectable manually from four times a day to once per week.

### Environmental data

#### Ambient operating temperature:

5 to 40 °C (41 to 104 °F)

#### Ambient operating humidity:

Up to 95 % RH non-condensing

#### Sample temperature:

1 to 40 °C (32 to 104 °F)

#### Sample flow:

Continuous, 200 to 500 ml/min

#### Sample pressure:

5 psi maximum

#### Sample limitations:

Samples containing particles 100 microns (0.004 in.) in diameter or larger may require pre-filtration.

### Maintenance

#### Routine service interval:

12 months

### Display

Color, TFT, liquid crystal display (LCD) with built-in backlight and brightness adjustment

#### Diagonal display area:

- 145 mm (5.7 in.)
- 76800 pixel display\*

\* A small percentage of the display pixels may be either constantly active or inactive.

Max. percentage of inoperative pixels <0.01 %.

### Dedicated operator keys

- Group select / left cursor
- View select / right cursor
- Menu key
- Up / increment key
- Down / decrement key
- Enter key

### Mechanical data

#### Ingress protection

IP31\*\*

#### Sample connections

##### Inlet:

- 6 mm OD x ¼ in. BSP push-fit elbow

##### Outlet:

- 10 mm OD x ⅜ in. BSP push-fit elbow

### Dimensions

#### Height:

653 mm (25.7 in.)

#### Width:

366 mm (14.4 in.) max.

#### Depth:

- 183 mm (7.2 in.) door closed
- 430 mm (16.9 in.) door open

#### Weight:

15 kg (33 lb)

#### Materials of construction

##### Electronics enclosure:

- 10 % glass-loaded polycarbonate

##### Main enclosure:

- Noryl

##### Lower tray:

- 20 % glass-loaded polypropylene

##### Door:

- Acrylic

### Electrical

#### Power supply ranges

- 100 to 240 V max. AC 50 / 60 Hz  $\pm 10\%$  (90 to 264 V AC, 45/65 Hz)
- 18 to 36 V DC (optional)

#### Power consumption

- 75 W max. – AC
- 100 W max. – DC

\*\* Not evaluated for UL or CB

<sup>1</sup> Maximum measured error across full measurement range.

<sup>2</sup> Testing based on IEC 61298 Parts 1-4 : Edition 2.0 2008-10.

<sup>3</sup> Testing based on BS ISO 15839 : 2003.

---

## ...Specification

### Analog outputs

6 isolated current outputs, fully assignable and programmable over a 0 to 20 mA range (up to 22 mA if required)

### Alarms / relay outputs

One per unit:

- Stop relay
- Attention relay
- Failure relay
- Calibrate relay

Six per unit:

- Fully user-assignable alarm relays

### Rating

Voltage:

- 250 V AC
- 30 V DC

Current:

- 5 A AC
- 5 A DC

Loading (non-inductive):

- 1250 VA
- 150 W

### Connectivity / communications

#### Ethernet connection

Web server with ftp for real-time monitoring, configuration, data file access and email capability

#### Communications

PROFIBUS DP V1.0 (optional)

### Data handling, storage and display

#### Security

Multi level security:

- Operator and configuration password or security switch

#### Storage

Removable Secure Digital (SD) card

#### Trend analysis

Local and remote

#### Data transfer

SD card or FTP

### Approvals, certification and safety

#### Safety approval

cULus

#### CE mark

Covers EMC & LV directives (including latest version EN 61010)

#### General safety

- EN61010-1
- Overvoltage Class II on inputs and outputs
- Pollution category 2

### EMC

#### Emissions & immunity

Meets requirements of IEC61326 for an industrial environment

---

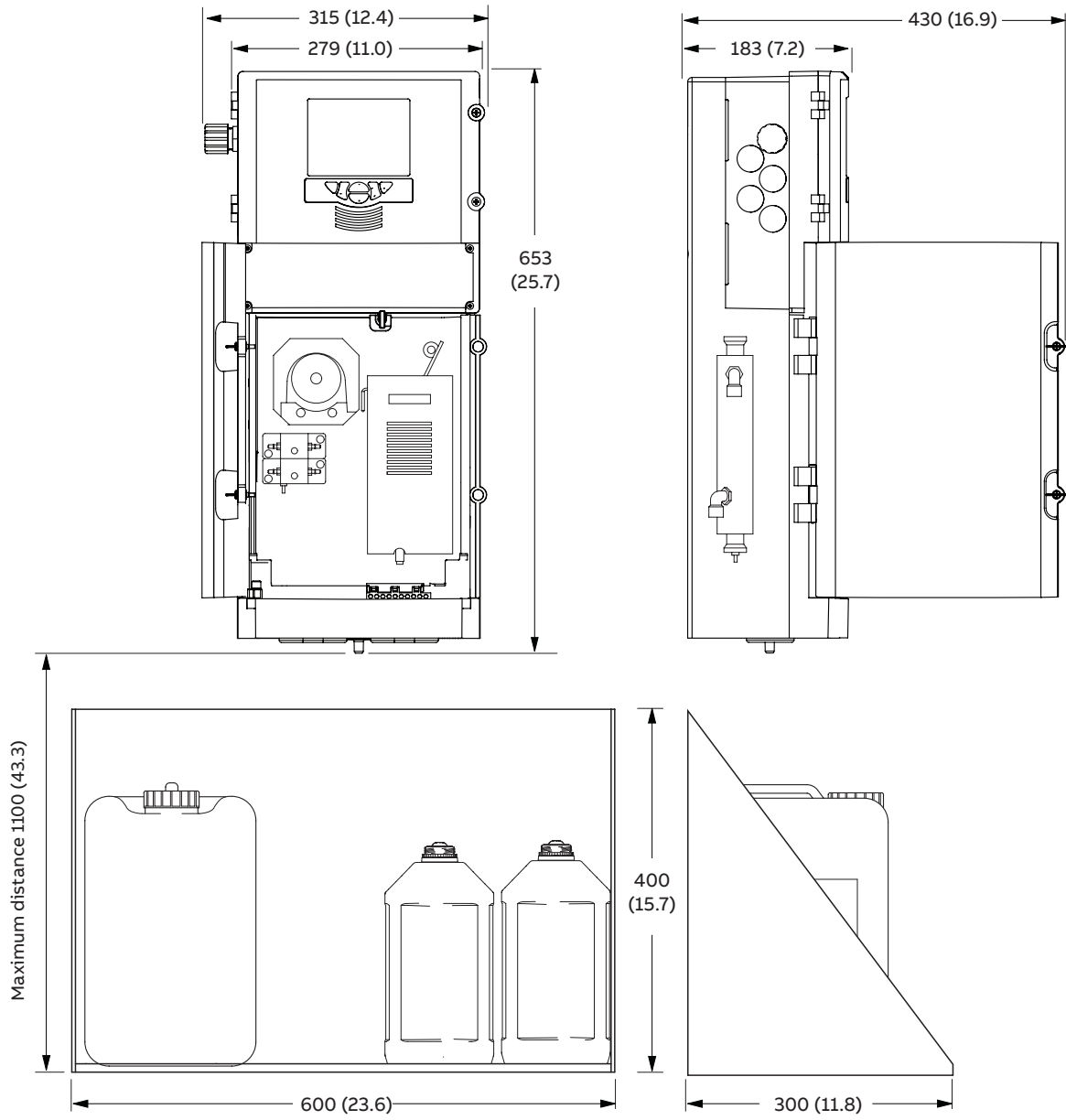
## Acknowledgements and trademarks

Microsoft, Windows, MS-DOS and Internet Explorer are registered trademarks of Microsoft Corporation in the United States and/or other countries.

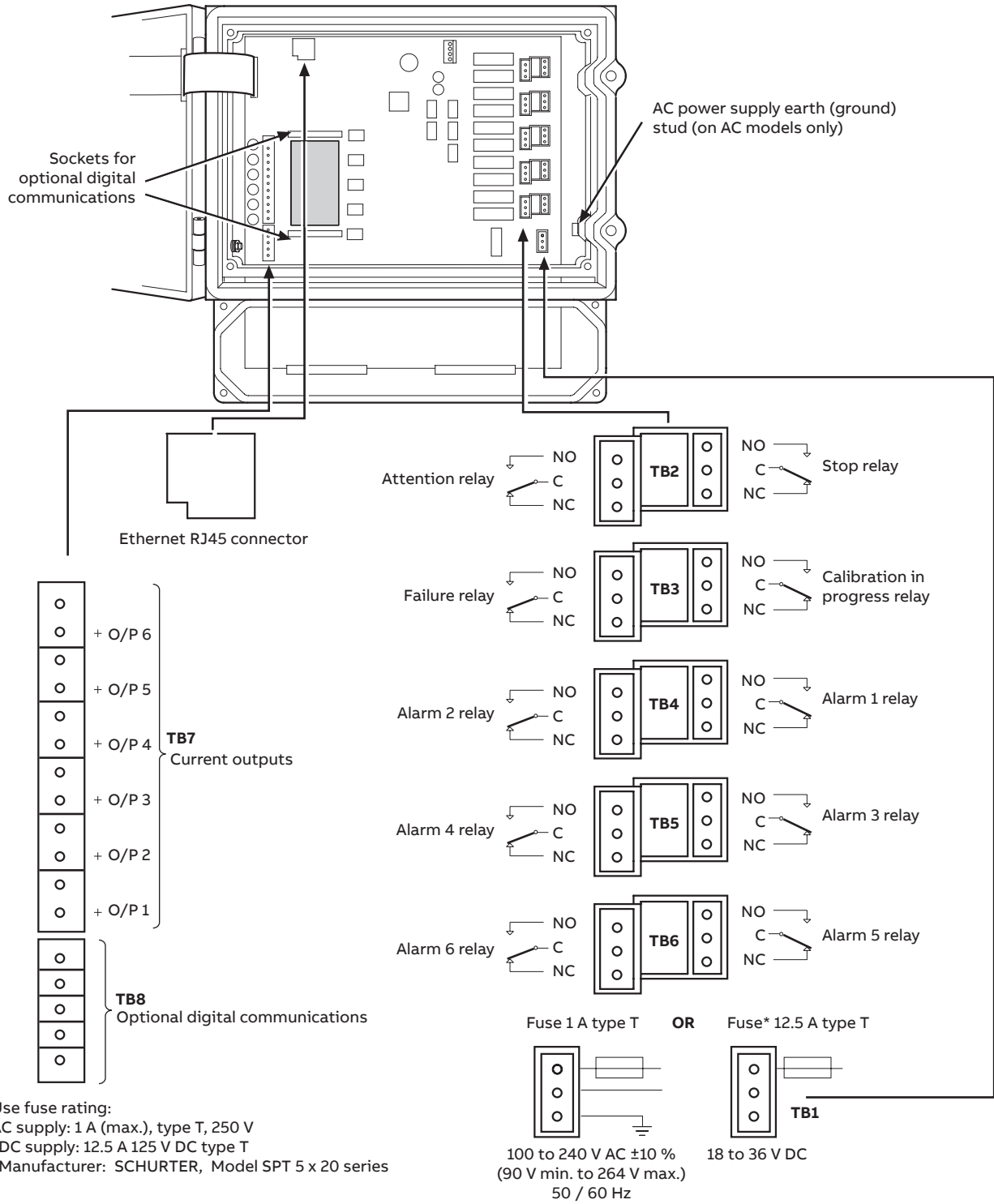
PROFIBUS is a registered trademark of PROFIBUS organization.

## Overall dimensions (shown with optional reagent tray)

All dimensions in mm (in.)



## Electrical connections





## Ordering information

	Standard ordering code					Optional ordering code												
	AAM631/	A1	A1	XX	XX	XX	XX	XX	XX	XX	XX							
<b>Aztec 600 ISE ammonia analyzer</b>																		
<b>Measuring range</b> 0.050 to 1000 ppm NH <sub>3</sub>		A1																
<b>Number of streams</b> Single stream			A1															
<b>Power supply</b> 90 to 264 V AC / 50 to 60 Hz 18 to 36 V DC				A1	A2													
<b>Output signal</b> 4 to 20 mA + Ethernet 4 to 20 mA + Ethernet + PROFIBUS DPV1						A1	D2											
<b>Display language</b> German Italian Spanish French English										A1	A2	A3	A4	A5				
<b>Add 1 or more 2-digit codes after the standard ordering information to select any additional options if required.</b>																		
<b>Reagent level sensors</b> Calibration standard level sensors											S1							
<b>Data storage</b> SD Card												D1						
<b>Certificates</b> Calibration certificate													CD					
<b>Reagent storage</b> Reagent tray Reagent tray + reagent containers													R1	R2				
<b>Maintenance kits</b> Annual maintenance kit														V1				
<b>Documentation language</b> German Italian Spanish French English														M1	M2	M3	M4	M5

Sales



Service



Software



---

**ABB Limited****Measurement & Analytics**

Oldends Lane, Stonehouse  
Gloucestershire, GL10 3TA  
UK

Tel: +44 (0)1453 826 661

Fax: +44 (0)1453 829 671

Mail: [instrumentation@gb.abb.com](mailto:instrumentation@gb.abb.com)

**ABB Inc.****Measurement & Analytics**

125 E. County Line Road  
Warminster, PA 18974  
USA

Tel: +1 215 674 6000

Fax: +1 215 674 7183

**[abb.com/measurement](http://abb.com/measurement)**

We reserve the right to make technical changes or modify the contents of this document without prior notice. With regard to purchase orders, the agreed particulars shall prevail. ABB does not accept any responsibility whatsoever for potential errors or possible lack of information in this document.

We reserve all rights in this document and in the subject matter and illustrations contained therein. Any reproduction, disclosure to third parties or utilization of its contents – in whole or in parts – is forbidden without prior written consent of ABB.

© Copyright 2017 ABB.  
All rights reserved.